



To Nashville & Interstate 64



Locust Creek Road

Black Diamond Road

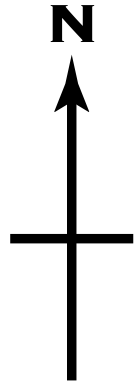
Pierce Road



Oakdale Blacktop

Dubois Blacktop

To Carbondale



**From I64** take Nashville IL exit (exit 50) south onto State Route 127 towards Nashville (3 miles to Nashville).

Travel on 127 south through Nashville. Approximately 5 miles south of Nashville turn right onto Locust Creek Road and travel about 2 miles to Black Diamond Road and travel for about 1/2 mile. We are the first road on the right. You will see our sign.

**From State Rout 127 south**, travel approximately 14 miles north of Pinkneyville. Turn left onto Locust Creek Road and travel about 2 miles to Black Diamond Road. (Locust Creek Road T's into Black Diamond Road) Turn left onto Black Diamond Road and travel for about 1/2 mile. We are the first road on the right. You will see our sign.

**BLACK DIAMOND VINEYARDS, LTD.**  
3501 Black Diamond Road  
Nashville, Illinois 62263  
(618)336-5700  
[www.blackdiamondvineyards.com](http://www.blackdiamondvineyards.com)